



All for Living cells  
for your imaging®

# Stage Top Incubator

For microscopes

## Deliver High-Quality system to everyone!

Reach out to every user in every country who requires great cost performance & high-quality system.



Model: STRG-WELX-SET

# STR SERIES

## Time-Lapse Entry Model

### Lineup

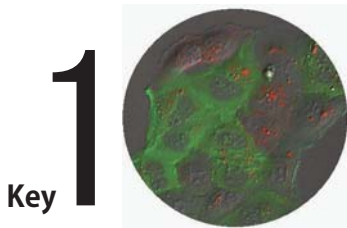
#### STRG-WELX-SET

With **digital CO2 mixer**  
for **100%CO2 gas use**

#### STRF-WELX-SET

With **analog flowmeter**  
for **premixed (5%CO2+95%Air) gas use**

\*\*\* All Dish Attachments and Fixing Lids are included \*\*\*



#### Tokai Hit QUALITY

Keep your sample happy with Tokai Hit High performance Heating, Humidity and CO2 control.



#### Simple & Reasonable

The system is Simple but yet high performance.



#### Happy set for start up

Necessary accessories are included in the package as standard. No more suffering from the product-selection.

# Advanced Start up Stage Top Incuabtor

# STR SERIES Time-Lapse Entry Model

**Accessories included** Following items are included in the system. No more quote / order of additional accessories required.

Applicable dish	Dish Attachment	Fixing Lid
35mm petri dish	ATX-D 	LX-D35 
50/60mm petri dish		LX-D56 
Chamber slide Slide glass Chambered coverglass	ATX-CSG 	LX-CSG 

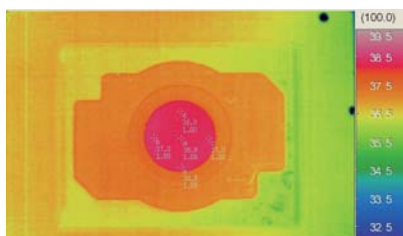
## Touch-Panel control

Multiple monitors to ONE, better and simple.



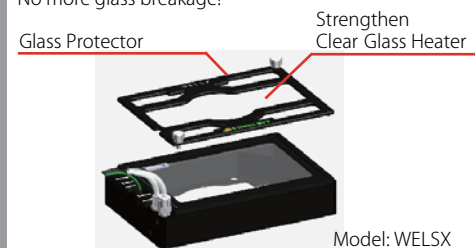
## Tokai Hit QUALITY

Uniform temperature regulation with original Top Heating Control keeps your sample happy.



## Prevent glass breakage forever

Protect your glass breakage with double features. No more glass breakage!



## Universal Chamber WELSX

Outside dimension is same as wellplate (127x85mm).

### Applicable vessels

- 35mm petri dish
- 50mm petri dish
- 60mm petri dish
- Chamber slide
- Slide glass
- Chambered coverglass



Model: WELSX

※cannot accommodate wellplate

## Easy 10 minutes setup

Only 4 cables are need to be connected (power cables and gas tubes 2pc). Good-bye to complicated setup!

## One-touch: magnetic fixing

Secure vessels and Dish Attachments are much easier to use. Introduce Simple but Strong fixing to keep your vessel in same place.

## Experiment as you plan

There are risk of using glassware, but with protector and strengthen clear glass heater will be Free from glass breakage and stopping your experiments during repairing.

## Detachable Lens Heater

Prevent entanglement of Lens Heater during imaging. The hook-up connector is secure by either magnet or manual-lock.

## Specification (STRG)

Operation	Setting Method	Touch-panel
Incubation mode	Manual	○
	Sample Feedback	△ (Optional)
Humidity	Internal humidifier	More than 90%
CO <sub>2</sub> Control	CO <sub>2</sub> regulation	Digital
	CO <sub>2</sub> setting range	5.0~20%
	CO <sub>2</sub> accuracy	±0.1% (at 5% CO <sub>2</sub> )
	Gas flow rate	160ml/min
Stage Heater	Regulation	Hi-speed ON/OFF
Software	Data logging	△ (Optional)

Feature and design	Strengthen Clear Glass Heater	○
	Top Heater Heating Method	○
	Detachable Lens Heater designed	○
Accessories	Connector	Flat cable
	Magnetic Dish Attachment	○
	Magnetic Dish Lid	○
Dish Attachment and Fixing Lid included in the system	One-touch gas tube	○
	35/50/60mm dish	○
	Chamber slide	○
	Slide glass	○
	Chambered coverglass	○